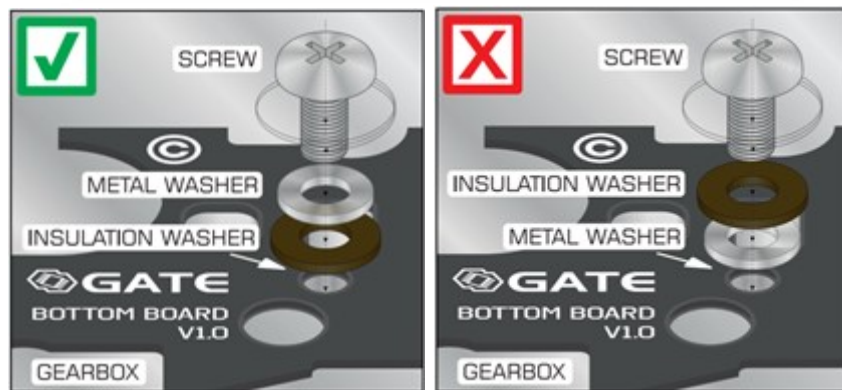
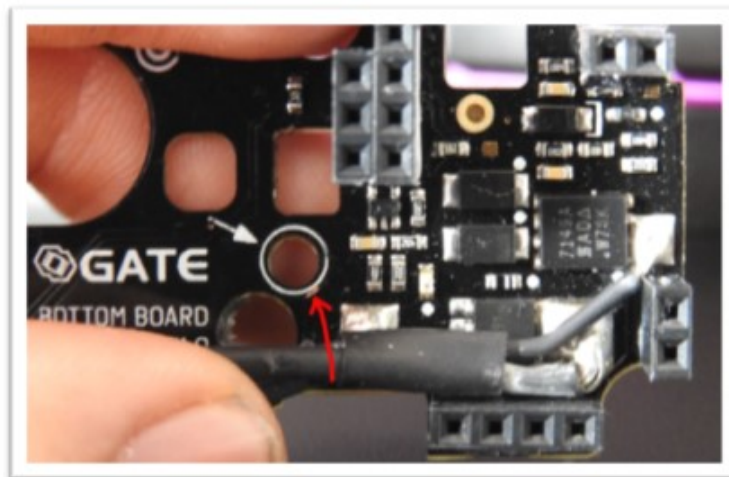


# Cases when GATE ETU warranty cannot be accepted

## The most common mistakes

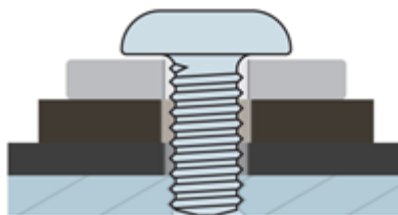
### 1. WASHER ISSUE

- **User's fault:** placing washers in wrong order
- **Result:** short circuit and permanent damage to TITAN
- **How to detect:**



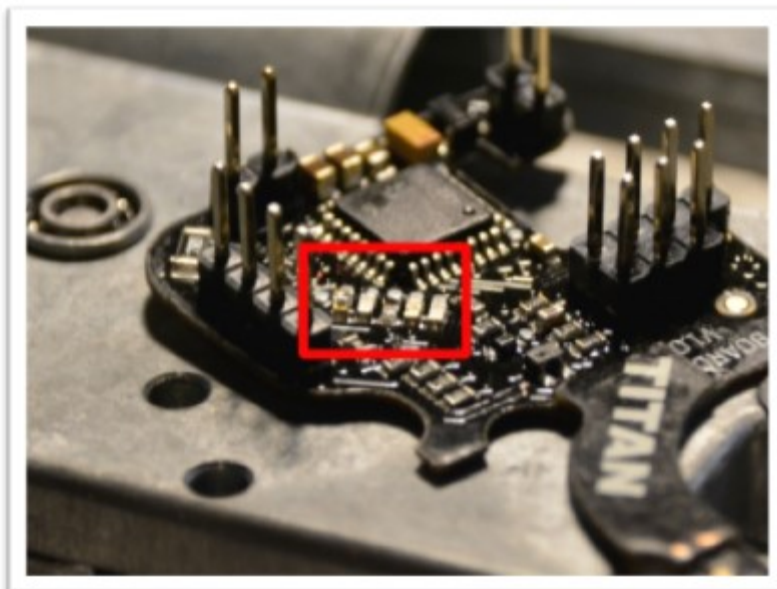
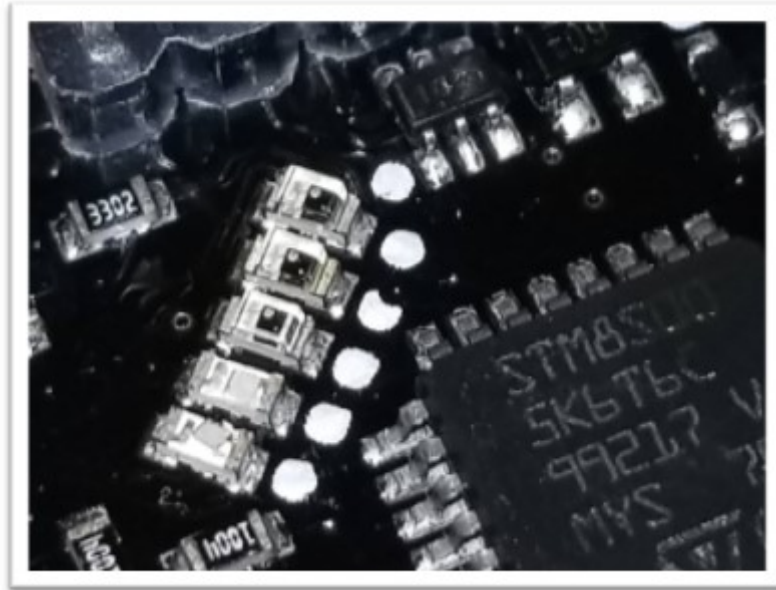
Correct order

1. Screw
2. Metal washer
3. Insulation washer
4. TITAN
5. Gearbox



## 2. TRIGGER SENSOR DAMAGE

- **User's fault:** pulling the trigger when the gearbox is open
- **Result:** torn off trigger sensors  
TITAN will not be able to detect all 5 trigger sensitivities even if using a standard trigger (please note that in the case of speed triggers TITAN cannot detect all trigger sensitivities either, which does not mean that sensors are damaged).
- **How to detect:** missing trigger sensors (receivers)



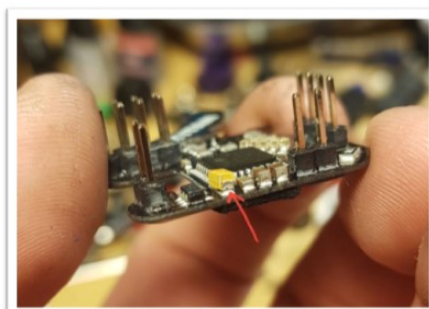
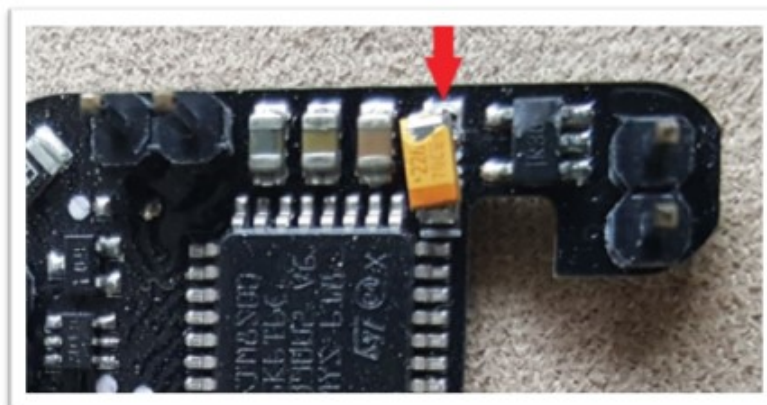
### 3. CABLE DAMAGE

- **User's fault:** incorrect cable routing
- **Result:** damaged or torn off wires by motor gear
- **How to detect:** damaged insulation



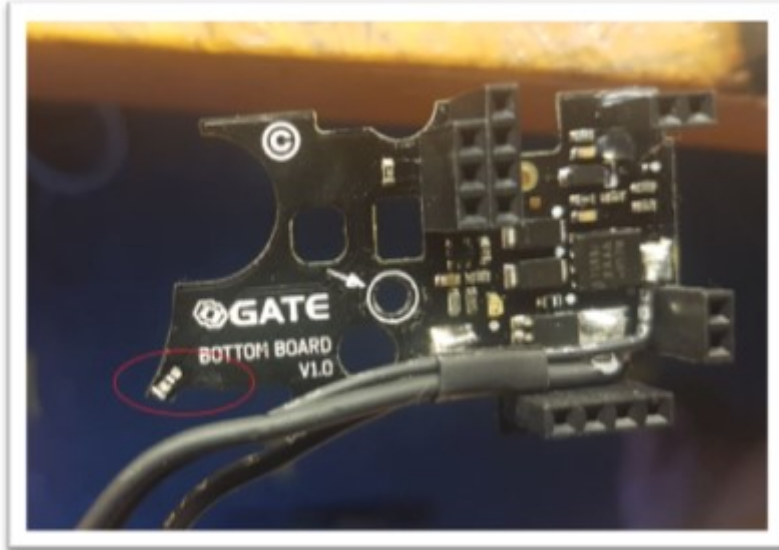
### 4. CAPACITOR DAMAGE

- **User's fault:** mounting TITAN V2 in an ICS gearbox without necessary modifications
- **Result:** the gearbox latch has damaged or torn the yellow capacitor
- **How to detect:** yellow capacitor is missing or damaged



## 5. GEAR SENSOR DAMAGE

- **User's fault:** very low sector gear shimming
- **Result:** torn off gear sensor
- **How to detect:** missing gear sensor



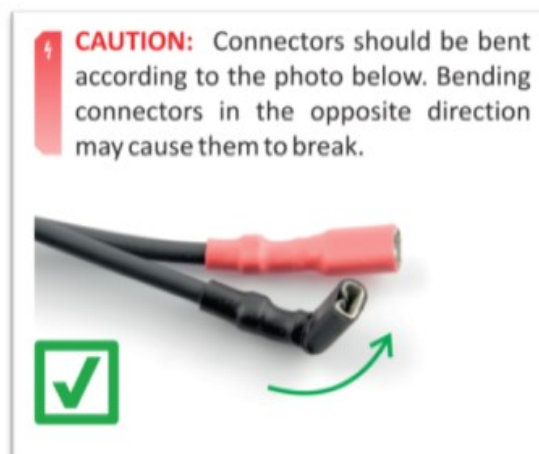
Less frequently encountered

## 6. FIRE SELECTOR SENSOR DAMAGE

- **User's fault:** incorrect bottom board placement in gearbox shell
- **Result:** torn off Fire Selector sensor
- **How to detect:** one of the trigger sensors missing

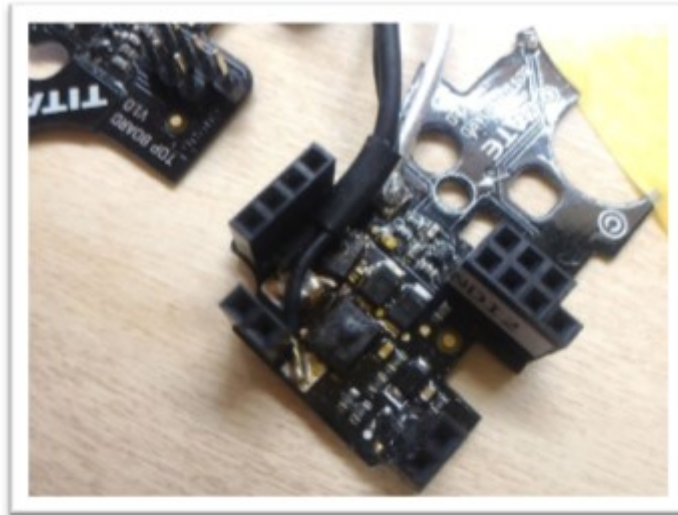
## 7. MOTOR CONNECTOR DAMAGE

- **User's fault:** using too much force during motor connector bending, bending connectors wrong way
- **Result:** broken motor connector
- **How to detect:** motor connector broken in half



## 8. REVERSE POLARITY

- **User's fault:** plugging a battery into the unit in incorrect order (a negative wire with a positive wire and a positive wire with a negative wire)
- **Result:** destroying the main parts of the board
- **How to detect:** the unit is not responding, the entire board is burnt



## 9. WIRE DAMAGE (CAUSED BY TRIGGER)

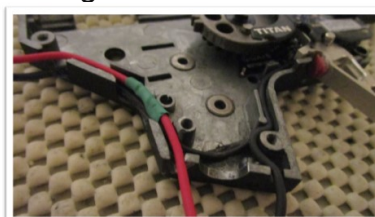
- **User's fault:** plugging a battery into the unit in incorrect order (a negative wire with a positive wire and a positive wire with a negative wire)
- **Result:** destroying the main parts of the board
- **How to detect:** the unit is not responding, the entire board is burnt

## 10. SHORT CIRCUIT CAUSED BY DAMAGING CABLE INSULATION

- **User's fault:** accidentally cutting both positive and negative wires with the body of the replica
- **Result:** Insulation damage, short circuit
- **How to detect:** visibly cut wires

## 11. REPAIRS OR STRUCTURAL MODIFICATION OF ANY TITAN PART (INCLUDING REWIRING AND COMPONENT REPLACEMENT)

- **User's fault:** interference in the structure of the unit
- **Result:** automatic warranty loss
- **How to detect:** visible changes such as different wire color



## Other Cases When Warranty May Be Accepted

- Recurring E01 to E06, E13, E14, and E15 errors
- No reaction whatsoever from the unit without visible damage
- No connection with USB-Link and/or Tactical Programming Card even if the unit is working properly without any visible damage (no programming option)
- Recurrence of error E07 combined with no cycle detection (after detailed troubleshooting)

In case of any doubts please contact GATE Support at

[support@gatee.eu](mailto:support@gatee.eu)

Office hours: 9:00 am – 4:00 pm CET  
Monday through Friday  
Typical response time is up 2 business days

## Dealer

ArmaPro s.r.o. IČ 02747758 [www.airsoftpro.cz](http://www.airsoftpro.cz)  
Bartoňova 925, 530 12 Pardubice